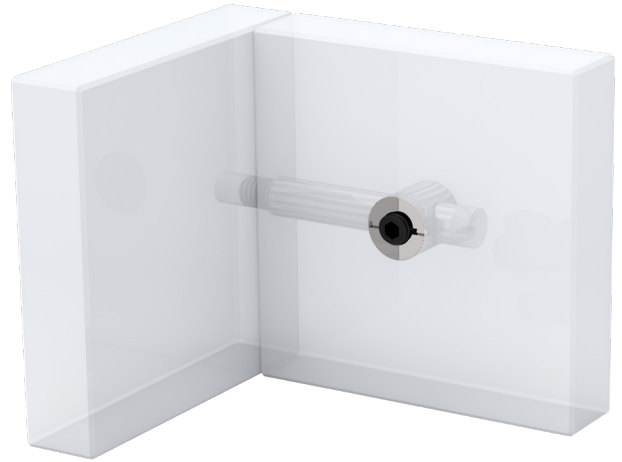
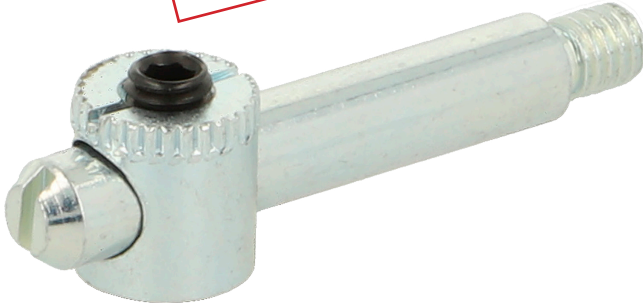


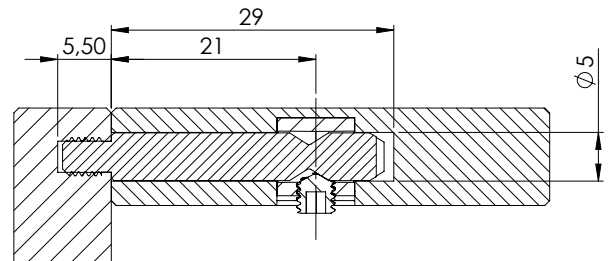
# "MINI" KNOCK DOWN "SYSTEM S"

APPLICABLE FOR  
PANELS DOWN TO 10 MM.



## "MINI" KNOCK DOWN "SYSTEM S"

- All parts made of steel
- Applicable for panels down to 10 mm
- Vibration resistant
- Permanent strong grip
- 90 degrees connection



### CYLINDER & GRUB SCREW

**Cylinder:**

Material: Steel, bright zinc plated

Size: Ø8 x 8,5mm

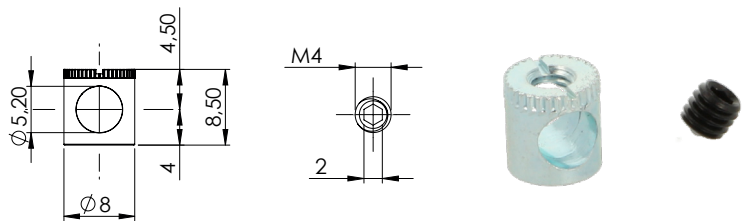
Item No.: #11.03.480

**Grub screw:**

Material: Steel, black oxidized

Size: M4 x 4mm, 2mm hex

Item No.: #11.03.481

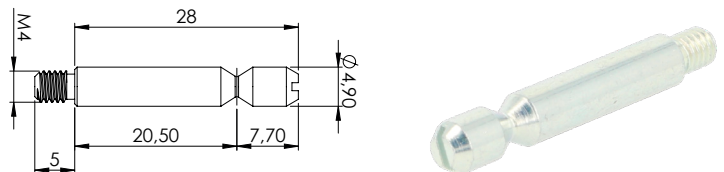


### DOWEL PIN

Material: Steel, bright zinc plated

Size: M4 x 20,5mm

Item No.: #11.03.482

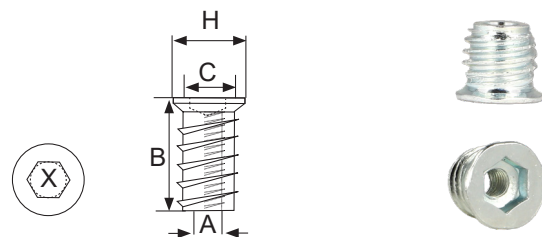


### SCREW IN BUSHING »M«

**Material Type**

Steel, bright zinc plated  
Screw in by use of hex key. With countersunk collar

A	B	C	X = Hex	H = Head	Item No.
M4	8 mm	Ø8,7 mm	6 X 3 mm	Ø12 mm	# 12.10.250
M4	10 mm	Ø8,7mm	6 X 3 mm	Ø12 mm	# 12.10.251



**SISO A/S**